

# Wireless Indoor Siren (SR-15)

20-Aug-2012

The Indoor Siren is used to attract attention by sounding an alarm when alarm signal is received from Control Panel. The SR-15 can also alert you to tamper violation, signal communication problems and low battery status.

## 1 Battery Compartment

(With a lid secured with 4 screws)

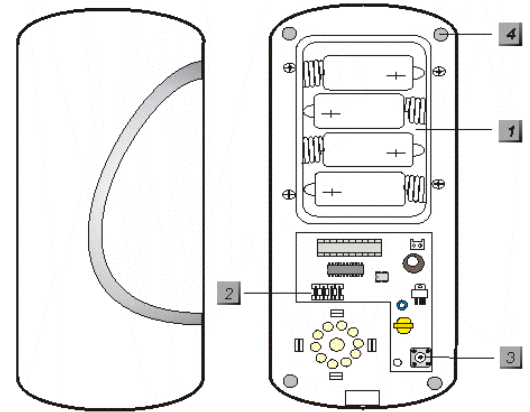
## 2 Function Switch Block

Contains 7 DIP Switches to enable the learning mode and to set the alarm period of siren and strobe light.

## 3 Tamper Switch

The tamper switch protects the device from being opened or from being removed from mounting surface.

## 4 Mounting Holes X 4



## Accessories included

In addition to the SR-15 itself, the following accessories are also included in the package:

- a. 4 x large wall plugs.
- b. 4 x 4 mm x 30 mm cross head fixing screws.
- c. 4 x 1.5V D alkaline cells.

## 1. DIP Switch Position Table

Remove the cover by unscrewing the single screw located at the bottom. In the middle of the L-shaped PCB board, you can see a Jumper Switch Block which consists of 7 DIP Switches. The function of each DIP Switch is listed as table right.

The DIP Switch is either ON or OFF. Top position indicates ON and bottom position indicates OFF.



<b>SW1</b>		Siren Learning
OFF		Normal operation
ON		Learn-in mode
<b>SW2</b>		Reserved
<b>SW3</b>	<b>SW4</b>	Siren Duration
OFF	OFF	3 min.
ON	OFF	5 min.
OFF	ON	10 min.
ON	ON	1 second (test)
<b>SW5</b>		Reserved
<b>SW6</b>		Memory Reset
OFF		Normal
ON		Clear Memory
<b>SW7</b>		Supervision
OFF		Supervision function disable
ON		Supervision function enable

\* For further detail please see section 4. **SR-15 Function Overview.**

## 2. Power Supply

SR-15 is powered by 4 D-cell alkaline batteries.

In addition, the SR-15 can detect if the battery is low. Low battery detection operates where the SR-15 has enough power to typically operate for 1 month before complete exhaustion. The siren low battery signal will be enunciated by five beeps when arming / disarming.

A low battery signal will be sent to the Control Panel along with regular signal transmissions for the Control Panel to display the status accordingly.

## 3. Supervision Function

When the Dip Switch #7 is slid to ON position, SR-15 will conduct a Self-test Periodically by transmitting a supervisory signal once every 30-50 mins in normal operation mode.

If this signal is not received, the Control Panel will indicate on its screen that the particular SR-15 is experiencing an out-of-order problem.

## 4. SR-15 Function Overview

### ■ Siren Audible Performance

The siren produces a minimum of 104 dBA sound pressure at 1 meter on axis. It is programmable via two DIP switches (SW3 and SW4) for four different siren durations:

- 1) 3 min.
  - 2) 5 min.
  - 3) 10 min.
  - 4) 1 second (for testing)
- The fourth position (1 second) is used for testing during installation.
  - For Burglar / Panic Alarm, SR-15 gives a continuous alarm sound.
  - For Fire / Water alarm, SR-15 gives an intermittent alarm sound of 2-sec siren followed by a 1 sec interval, cyclically during the programmed alarm duration.
  - The siren is silenced when either the programmed siren duration expires or the Control panel turns off the siren.

### ■ Previous Alarm Warning

If there has been an alarm while you were away, the SR-15 sounds alarm while the system is disarmed.

**WARNING:** *If the siren is activated for 3 seconds when you disarm your system, it is reminder you that there could be an intruder still in your premises.*

### ■ Audio Status Indication

While arming / disarming the system, the SR-15 uses different methods to distinguish various statuses for the user, as listed in following table:

<NOTE>

- ☞ For those marked with asterisk (\*), it means the Siren Audio indication will be effected by the Confirmation ON / OFF. When setting Confirmation to OFF, the confirmation sound will not be available.

	Siren Audio
Arm/Home	1 beep*
Disarm	2 beeps*
Arm (Low Battery)	5 beeps
Disarm (Low Battery)	5 beeps
Arm (Tamper)	5 beeps
Disarm (Tamper)	2 beeps*
Previous alarm warning	3 secs beep
Tamper Alarm	Continuous beeps
Entry/Exit Sound	Count-down beeps

### ■ Factory reset

The siren can be reset and memory contents cleared by following steps:

- Step 1: First, put the Control Panel into the programming mode to delete the learnt-in SR-15. Refer to the operation manual of your Control Panel for details.
- Step 2: Open the top case of SR-15 and the battery lid.
- Step 3: Remove the batteries, and then press the tamper switch once for discharging.
- Step 4: Slide DIP SW 6 to ON position and restore the battery. The siren will produce a short confirmation tone.
- Step 5: Slide the DIP SW 6 back to OFF position. The SR-15 returns to normal mode and the programming memory is clear.

## 5. Getting Started & Programming SR-15 into Control Panel

You can learn SR-15 into Control Panel via Configuration Webpage (IP Control Panel) or Programming Mode.

### 1. Learning the SR-15 into Control Panel Via Configuration Webpage

2 ways are provided to learn SR-15 into the Control Panel.

#### Way 1:

#### Learning the SR-15:

- Step 1: Release the screws at the bottom of SR-15 and pull the outer case out carefully. Locate the Function Switch Block.
- Step 2: Use a sharp subject to slide Dip SW3 & SW4 on SR-15 function switch block for your desired alarm period.
- Step 3: Put the Control Panel into the learning mode.

- Step 4: Slide Dip SW1 on the SR-15 function switch block to ON position. SR-15 sounds a short beep and enters learning mode. 3 seconds later, SR-15 sends out a learning code with a short beep to indicate.
- Step 5: If the Control Panel doesn't receive a learning code, slide Dip SW1 back to OFF and then ON position to enable SR-15 to enter the learning mode again. SR-15 sounds a beep to indicate. 3 seconds later, SR-15 sends out a learning code with a short beep to indicate.
- Step 6: If the Control Panel receives the learning code, it will list the sensor information on the webpage. Press **Add** on the webpage to confirm and then you are required to select operation area for the SR-15.
- The area selection is SR-15's operation area. No matter which operation area the SR-15 is assigned to, it raises an alarm when any sensor either in Area 1 or Area 2, is triggered.
- Step 7: Enter the zone number and zone name and then press OK key on the webpage to confirm. An acknowledgement will be sent to SR-15. When the acknowledgment is received, the SR-15 sounds two beeps to indicate that learning process is successful.

<NOTE>

- ☞ If the learning process fails, please remove the SR-15 learning memory from the control panel and repeat the step 3-7 again.

- Step 8: Slide Dip SW1 on the SR-15 to OFF position. The SR-15 leaves learning mode. If you don't slide Dip SW1 back to OFF position, the SR-15 will automatically leave the learning mode one hour after it enters the learning mode.

**Way 2:**

**Learning the SR-15:**

- Step 1: Release the screws at the bottom of SR-15 and pull the outer case out carefully. Locate the Function Switch Block.
- Step 2: Use a sharp subject to slide Dip SW3 & SW4 on SR-15 function switch block for your desired alarm period.
- Step 3: Slide Dip SW1 on the SR-15 function switch block to ON position. SR-15 sounds a short beep and enters to the learning mode. 3 seconds later, SR-15 sends out a learning code with a short beep to indicate.
- Step 4: Get into the Control Panel's configuration webpage and get into the **Add** Sensor section. Select operation area for the SR-15.
- The area selection is SR-15's operation area. No matter which operation area the SR-15 is assigned to, it raises an alarm when any sensor either in Area 1 or Area 2, is triggered.
- Step 5: Enter the SR-15's ID code and the sensor name and then press OK to confirm the settings.
- Step 6: If the learning process is successful, the webpage will display the learn-in sensor information on the **Panel Condition** section.

<NOTE>

- ☞ If the learning process fails, please remove the SR-15 learning memory from the control panel and repeat the step 4-6 again.

- Step 7: Slide Dip SW1 on the SR-15 to OFF position. The SR-15 leaves the learning mode. If you don't slide Dip SW1 back to OFF position, the SR-15 will automatically leave the learning mode one hour after it enters the learning mode.

**Programming the SR-15:**

- Step 1: Connect the Control Panel to the webpage and then get into the "**Program Siren**" mode.
- Step 2: Make sure the SR-15 is in the normal operation mode.
- Step 3: Set the "Siren Tamper", "Confirm" and "Entry Sound" to ON or OFF at your discretion and then click on those functions' correspondent radio buttons accordingly.

**Siren Tamper**

- If it is set to "**ON**", the SR or SR siren will alarm when the tamper switch is triggered.
- If it is set to "**OFF**", the SR or SR siren will remain silent when the tamper switch is triggered.

<NOTE>

- ☞ If the siren tamper is set as disabled (**OFF**), it will automatically revert to enable (**ON**) after about an hour if it is not switched back manually.

### Confirm

- If it is set to “**ON**”, the SR or SR Siren will sound beeps when the system is armed or disarmed.
- If it is set to “**OFF**”, the SR or SR Siren will remain silent when the system is armed or disarmed.

### Entry Sound

- If it is set to “**ON**”, the SR or SR Siren will sound beeps when the Entry timer is activated.
- If it is set to “**OFF**”, the SR or SR Siren will remain silent when the Entry timer is activated.

Step 4: Press Ok and then a short beep will be heard to indicate that the programming is successful.

## **2. Learning the SR-15 into Control Pane via Programming Mode**

### Learning the SR-15:

- Step 1: Release the screws at the bottom of SR-15 and pull the outer case out carefully. Locate the Function Switch Block.
- Step 2: Use a sharp subject to slide Dip SW3 & SW4 on SR-15 function switch block for your desired alarm period.
- Step 3: Put the Control Panel into **Device +/-** menu and select the **Add Devices** sub menu (See operation manual of Control Panel).The screen on Control Panel shows “\*Push button on Device to add\*”.
- Step 4: Slide Dip SW1 on the SR-15 function switch block to ON position. SR-15 sounds a short beep and enters to the learning mode. 3 seconds later, SR-15 sends out a learning code with a short beep to indicate.
- Step 5: If the Control Panel doesn't receive a learning code, slide Dip SW1 back to OFF and then ON position to enable SR-15 to enter the learning mode again with a short beep to indicate. 3 seconds later, SR-15 will send out a learning code again with a short beep to indicate.
- Step 6: If the Control Panel receives the learning signal, the screen displays “Detected: (OK?) SR-15”. Press OK key on the panel to confirm and then you are required to select operation area for the SR-15. Options available are **single area** and **whole system**.
- Single area means that the SR-15 raises an alarm only when the sensor, which is learnt in this area, is triggered.
  - Whole system means that the SR-15 raises an alarm when any sensor, which is learnt in either Area 1 or Area 2, is triggered.
- Step 7: Select either Single Area or Whole system, enter the zone number and zone name and then press OK key on the panel to confirm. An acknowledgement will be sent to SR-15. When the acknowledgment is received, the SR-15 sounds two beeps to indicate that learning process is successful.

### <NOTE>

- ☞ If the learning process fails, please remove the SR-15 learning memory from the control panel and repeat the step 3-7 again.
- Step 8: Slide Dip SW1 on the SR-15 to OFF position. The SR-15 leaves learning mode. If you don't slide Dip SW1 back to OFF position, the SR-15 will automatically leave the learning mode one hour after it enters the learning mode.

### Programming the SR-15:

- ☞ Befor you program the SR-15, you should check whether the system is in the area where the SR-15 has been learnt-in.
- ☞ During the learning process (above step 6), if **Single Area** is selected, the SR-15 only can be programmed in the pre-learnt area. However, if **Whole system** is selected, the SR-15 can be programmed either in area 1 or area 2.

Put the Control Panel into **Device +/-** menu and select the **Program Siren** sub menu (See operation manual of Control Panel), you can find the following selections:

#### **1) Siren Tamp. Off/On** (Siren Tamper Off/On)

- SR-15 is protected against any attempt to open the lid or to detach SR-15 from its mounting surface.
- If the siren detects a tamper condition it will activate the siren & strobe light for the programmed alarm period. A tamper signal will be sent to the Control Panel along with regular signal transmissions for the Control Panel to display the status accordingly. If the tamper condition persists, the siren will sound a series of five beeps either every time the system is armed or when the tamper is enabled, to indicate a fault.
- Tamper feature can be disabled by selecting **Siren Tamp. Off**. The SR-15 temporarily stops the tamper detection for one hour (especially designed for replacing battery). After one hour, the SR-15 tamper automatically revert to **On** even if it is not switched back.

- Tamper feature can be enabled by selecting **Siren Tamp. On**. The SR-15 enables its tamper protection.

### 2) Confirm Off/On (Confirmation Off/On)

- The selections are used to enable or disable whether SR-15 plays confirmation beeps while system is armed or disarmed.

### 3) Entry Snd Off/On (Entry Sound Off/On)

- The selections are used to enable or disable whether SR-15 plays counting-down beeps during the entry delay period.

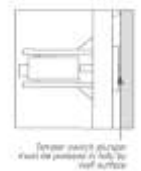
#### <NOTE>

- ☞ When any of the Siren Tamp. Off/On, Confirm Off/On or Entry Snd Off/On is selected and press OK key on the panel, the SR-15 sounds a beep to indicate the setting success.

## 6. Installing SR-15

**The tamper switch plunger protrudes through the back of the unit, so that if the siren is pulled off from the wall, the alarm will be activated. Ensure it is fully depressed when the siren is mounted. If there is a gap, pack with a suitable spacing material.**

- Step 1. Find the location where SR-15 is to be mounted.
- Step 2. Using the large screws and wall plugs provided, mount on wall through the 4 x mounting holes.
- Step 3. Fix the siren cover with the securing screw.
- Step 4. Enable tamper switch by selecting the tamper enable/disable menu on the Control Panel (please refer to the manual of Control Panel for details).
- Step 5. Check if the installation is successful by testing from the Control Unit by arming and disarming function. Successful arming/disarming is indicated by the table provided in **Audio Status Indication**.



#### <NOTE>

- ☞ If 5 short-beeps are noticed while arming, it means the tamper is not correctly set. Check to ensure that tamper is properly set and then test from Control Unit again.
- Step 6. The installation is now completed.

## Change the battery

- Step 1: Get into the Control Panel's programming mode, disable the Siren Tamper function and then press **OK** key on the Control Panel (please refer to the Manual of Control Panel for details). The SR-15 will sound a beep to indicate the tamper is closed.
- Step 2: Release the screws at the bottom of SR-15 and pull the outer case out carefully.
- Step 3: The battery compartment is a large box in the SR-15 with a lid secured with 4 screws.
- Step 4: Remove the four screws and take off the compartment lid.
- Step 5: Remove the old batteries; and press the tamper once for discharging.
- Step 6: Insert the D cell alkaline batteries provided into the battery compartment, carefully to put the batteries in the right way around.
- Step 7: The SR-15 will give beeps when the last battery is inserted.
- Step 8: Replace the battery compartment lid with the four screws taking care not to over tighten.
- Step 9: Put the Control Panel into the programming mode again and enable the **Siren Tamper** function again (please refer to the Manual of Control Panel for details). The SR-15 will sound a beep to indicate the tamper is opened.